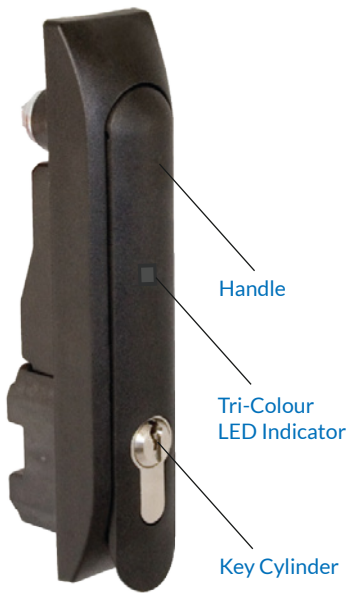


Electronic Locking Swing Handle - Installation



Package Contents:

- Electronic Locking Swing Handle
- 78.7" (2000 mm) Wire Harness
- M3 x 25mm Long Mounting Screws (qty 4)
- M3 x 14mm Long Mounting Screw (qty 1)
- Rotation Limiter
- Cam Bolt
- Top Mounting Bracket
- Bottom Mounting Bracket
- Installation Instructions
- Keys

Specifications:

Voltage: 12VDC to 24VDC (NOTE: Status LED will blink red if the supply voltage is out of range.)

Standby Current: 50mA maximum at 12VDC

Operating Current: 200mA maximum at 12VDC (with no external mechanical load applied to handle)

Operating Transit Time: 1 second maximum (NOTE: Power must be present during transit times. If power is removed while the lock slide is moving to the unlock position, then the control input signal must be asserted again. If power is removed while the lock slide is moving to the lock position, it will complete it's cycle when power is restored.)

Electronic Unlock Time: 3 seconds minimum

Alarm Outputs: 100mA/output maximum

Overall Dimensions: 6.71" H x 1.45" W x 1.98" D (170.6 x 37 x 50.25mm)

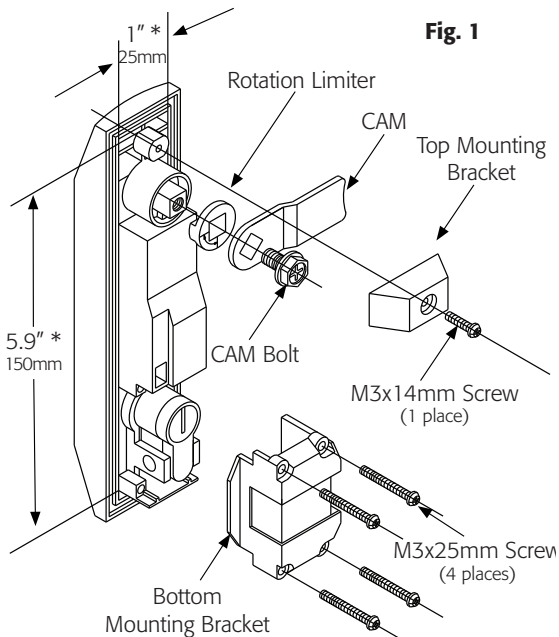


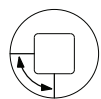
Fig. 1

Handle Mounting:

1. Assemble handle according to the proper handing required.
2. Rotation Limiter and Bottom Mounting bracket determine handing.
3. If existing cam or rod mechanism are installed on original handle remove and install on new handle.
4. Ensure the proper cutout in the door (See Fig.1).
5. Install handle through cutout and install top & bottom mounting brackets.
6. Install wiring harness and route to hinge side of door securing in place to ensure that nothing will bind or catch.
7. Proceed to wiring (See Fig.2).

Note:

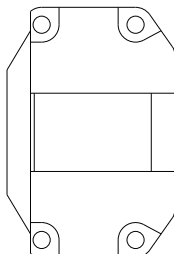
Handle rotation is determined by rotating limiter and bottom mounting bracket



Rotation Limiter

Viewed from back.

Handle rotation is anti-clockwise from front.



Bottom Mounting Bracket

Viewed from back.

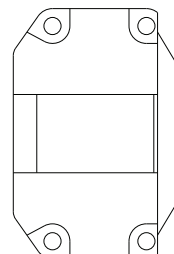
Key rotation is anti-clockwise from front



Rotation Limiter

Viewed from back.

Handle rotation is clockwise from front.



Bottom Mounting Bracket

Viewed from back.

Key rotation is clockwise from front

Electronic Locking Swing Handle - Installation

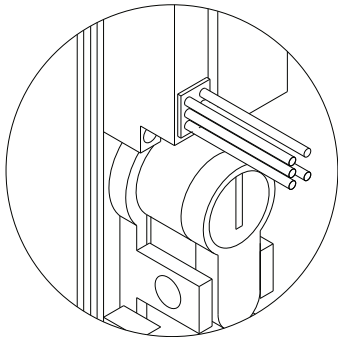


Fig. 2

RED: Positive
BLK: Negative
ORG : Activation Trigger
YEL: 100mA Output for Alarm
BRN: 100mA Output for Alarm

Wiring:

1. Red & Black are 12 to 24 VDC input voltage.
2. Orange is a positive input with a Normally Open Switch. The lock will unlock for a minimum of 3 seconds on a momentary activation (50 millisecond min.) or remain unlocked as long as the circuit is closed
3. Yellow is an alarm that will activate when the key is used to unlock the cabinet or anytime the handle is not seated and locked.
4. Brown is an alarm that will activate when the lock is electrically activated and will remain on until the lock electrically relocks.

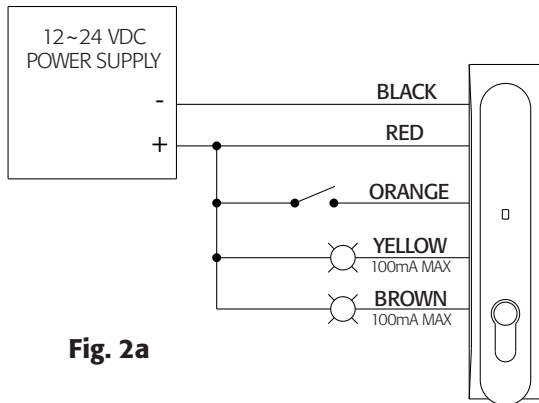


Fig. 2a

Lock Status	Latch LED	Alarm Wires
Secure	Steady Blue	Inactive
Electrically Released	Blue/ Magenta Flashing	Brown Active
Mechanically Released	Blue Flashing	Yellow Active
Handle Not Fully Closed	Blue/Red Flashing	Yellow/Brown Active

Note:

The lock sensor is an optical device that senses the presence of the locking cam.
Reflectivity of the locking cam material can affect sensing.
Keyed cylinder can affect sensing.
Removal of the factory installed keyed cylinder will void warranty.