

## RFM Series Wall Mount Racks and Brackets

Les râteliers muraux et les supports offrent une solution économique pour les systèmes où la sécurité d'un cabinet n'est pas nécessaire. Les unités peuvent être fixées au mur ou commandées avec des charnières à balancement qui permettent un accès facile aux équipements.

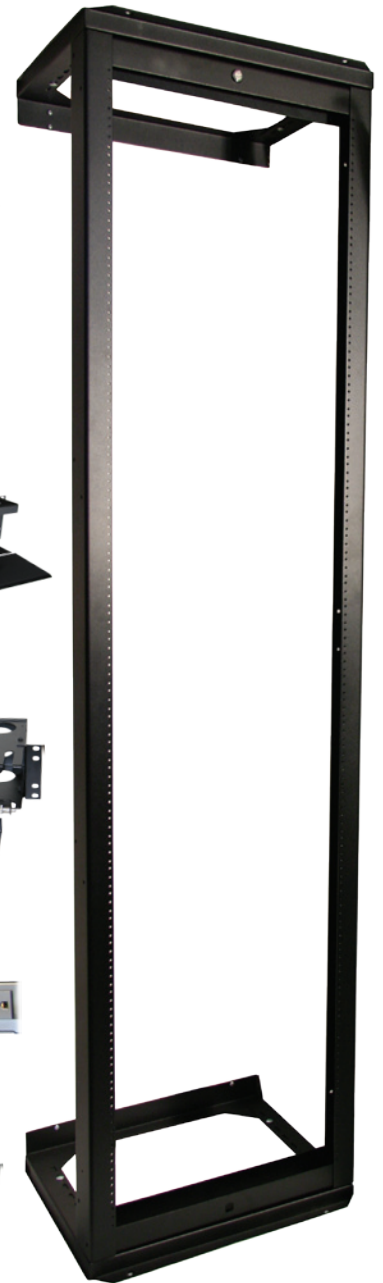
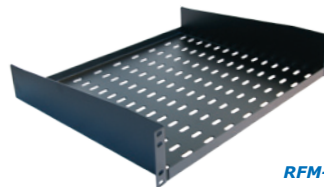


**Standard Features Include:**

- Heavy gauge fully welded construction
- Various Heights: 1U ~ 11U
- Various Depths: Fixed and Adjustable
- 19.0" EIA Mounting
- Tapped #10-32 UNF

**Wall Mount Brackets:**

- RFM-1909-WMB
- RFM-1906-WMB
- RFM-1902-WMB



RFM-1944-RSO-ADJ (Wall Mount, swing out rack)

**R. F. Mote Wall Mount Racks** provide an *Economical Solution* for systems where the security of a cabinet is not required and installation space is limited. These units may be fixed to the wall or ordered with swing out features which allow for easy access to equipment.

Standard color is black. Custom colors and sizes are available upon request



RFM-1920-RWF (Wall Mount Rack)



RFM-1920-RWS (Swing-Out Rack)

**Standard Features Include:**

- Heavy gauge steel fully welded construction
- Height: 35.5"H (18U)
- Various Depths: Fixed and Adjustable
- 19.0" EIA Mounting
- Tapped #10-32 UNF



**Standard Features Include:**

- Heavy gauge steel fully welded construction
- Height: 85.5"H (44U)
- Various Depths: Fixed and Adjustable
- 19.0" EIA Mounting
- Tapped #10-32 UNF

**Options (Brackets and Racks) Include:**

- Various shelves - fixed or retractable
- Several styles of horizontal cable managers; high density and regular cable management available
- Various styles of standard & current monit. power bars