

## RFM Series Fortress Cabinet

R. F. Mote Fortress Series Cabinets are available in 36" and 42" depths. Standard kitted Fortress cabinets include: 2 perforated doors, 2 side panels, 2 pair cage-nut style mounting rails, levelling feet, top cover plates, and hardware package.



### Standard Features Include:

- Perforated Doors are lockable and removable
- 2 Solid side panels
- 4 cage nut style Mounting Rails with silk-screened U-markings (also available tapped #10-32)
- Hardware package (qty 24, #10-32 screws)
- Cable access in top and bottom of cabinet
- Heavy gauge steel, fully welded construction
- UL 2416 Listed
- UL Rated for up to 3000 lbs Static Load
- 4 grounding points
- Levelling feet
- Standard colour is textured black powdercoat
- Custom colours (e.g. RAL 7035) also available



Series Fortress Cabinet – Kitted

Part number	Overall width	Frame depth	Overall depth (w/doors)	Height	# of U's
RFM-FORTRESS-2	30.00"	42.00"	47.00"	83.00"	45U
RFM-FORTRESS-1	30.00"	36.00"	41.00"	83.00"	45U
RFM-FORTRESS-2-72	30.00"	42.00"	47.00"	72.00"	38U
RFM-FORTRESS-1-72	30.00"	36.00"	41.00"	72.00"	38U

Ganging version available – shipped without side panels and incl. ganging kit add suffix '-G' to part number (e.g. RFM-FORTRESS-2-G)

Tapped mounting rails available. add suffix '-T' to part number (e.g. RFM-FORTRESS-2-T)



Scan QR Code



for more info!

## RFM Series Fortress Cabinet

## Common Options



Sloped front/door CMS

Part number	Depth	Width	Height
RFM-FORTA-CMS	10.00"	3.00"	68.50"
RFM-FORTA-CMS-72	10.00"	3.00"	57.50"

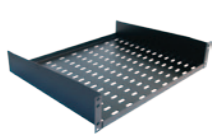
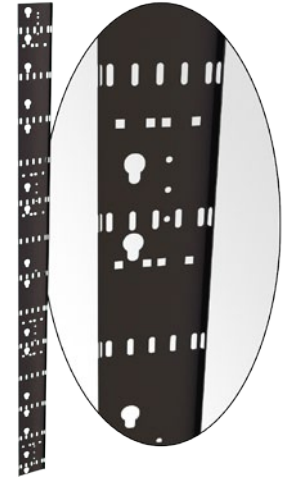
Squared front/door CMS

Part number	Depth	Width	Height
RFM-FORT-CMS	10.00"	3.00"	68.50"
RFM-FORT-CMS-72	10.00"	3.00"	57.50"



Vertical cable trough

Part number	H	W
RFM-472-VCT	65.88"	4.00"
RFM-459-VCT	52.75"	4.00"
RFM-435-VCT	28.75"	4.00"
RFM-572-VCT	65.88"	5.00"
RFM-559-VCT	52.75"	5.00"
RFM-535-VCT	28.75"	5.00"
RFM-672-VCT	65.88"	6.00"
RFM-659-VCT	52.75"	6.00"
RFM-635-VCT	28.75"	6.00"



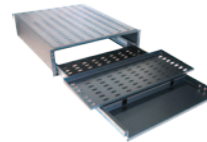
Shelf - fixed series - 100LB capacity

Part number	Depth	Spacing
RFM-1921-RFS	21"	2U
RFM-1915-RFS	15"	2U
RFM-1912-RFS	12"	2U
RFM-1909-RFS	9"	2U



Shelf - retractable series - 100LB capacity

Part number	Depth	Spacing
RFM-1920-RRS	20"	2U



Retractable with pivoting keyboard shelf

Part number	Depth	Spacing
RFM-1922-RPKS	22"	3U



Grounding Bar – Horizontal & Vertical

Part number	Copper Bar
RFM-HGB-19	1"w x 3/16" Thick - Horiz.
RFM-GB-83	1"w x 3/16" Thick - Vert.
RFM-GB-72	1"w x 3/16" Thick - Vert.
RFM-GB-59	1"w x 3/16" Thick - Vert.
RFM-GB-35	1"w x 3/16" Thick - Vert.



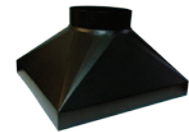
Power Bars – Horizontal & Vertical

Part number	Mnt.	Rated
RFM-19-PBH-8	Horz	15A
RFM-19-PBHT	Horz	15A
RFM-19-PBH-20A	Horz	20A
RFM-19-PBHT-20A	Horz	20A
RFM-48-PBV-18	Vert	15A
RFM-62-PBV-24	Vert	15A
RFM-62-PBV-20A-24	Vert	20A



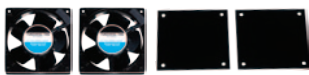
Horizontal Cable Trough – Standard & High Density

Part number	L	H	W	Part description
RFM-HCT-30	30.00"	4.75"	5.88"	Trough - Standard
RFM-HCT-30-10	30.00"	4.75"	10.75"	Trough - HD
RFM-HCTE-C-5	n/a	4.56"	5.63"	Trough - End Cap
RFM-HCTE-C-10	n/a	4.56"	10.63"	Trough - HD end cap
RFM-HCT-J-0	1.625"	4.50"	n/a	Joiner for end cap



Exhaust Duct

Part number	description
RFM-EXFAN-DUCT	Adjustable Height
RFM-EXFAN-DUCT-8	Square to Round



4" & 10" Exhaust Fan assemblies

Part number	Airflow
RFM-2-FAN-CAB	220 CFM
RFM-4-FAN-CAB	440 CFM
RFM-10-FAN	525 CFM
RFM-10-FAN-2	1050 CFM

c/w Mounting Panel(s) for free standing cabinets



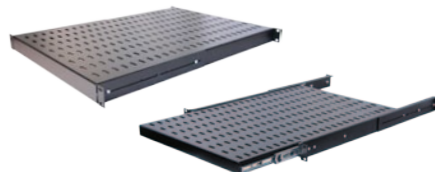
Jumper Kit

Part number	Cable
RFM-JK-60	6Awg, 60'L



Grounding Kit

Part number	Cable (4 pcs.)
RFM-GRD-KIT	10Awg, 16'L



Adj. Mount Depth - Fixed Position

Part number	Shelf depth	Overall adjustable mounting depth	Spacing
RFM-1726-CFS-4	26.00"	6.00" ~ 33.475"	1U
RFM-1719-CFS-4	19.00"	6.00" ~ 26.625"	1U
RFM-1716-CFS-4 (note: non-vented)	16.00"	6.00" ~ 23.625"	1U
RFM-2440-CFS-4		23.75" ~ 45.50"	1U

Adj. mount depth - Retractable

Part number	Shelf depth	Overall adjustable mounting depth	Spacing
RFM-1726-CRS-4-1U	26.00"	13.00" ~ 33.35"	1U

note: Shelves are 4-Point mounting



Horizontal Cable Management

Part number	Spacing
RFM-191D-HCM	1U
RFM-192D-HCM-TD	2U
RFM-194D-HCM-TD	4U
RFM-191D-HCM-D	1U
RFM-192D-HCM-D	2U
RFM-195D-HCM-D	5U
RFM-191D-HCM-F	1U
RFM-192D-HCM-F	2U
RFM-191D-HCM-FD	1U
RFM-192D-HCM-FD	2U
RFM-194D-HCM-FD	4U
RFM-192D-HCM-FHD	2U